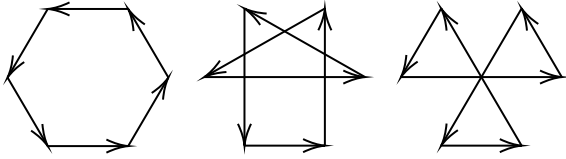
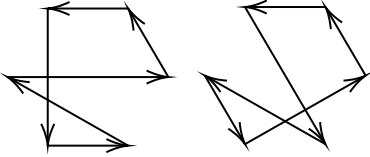


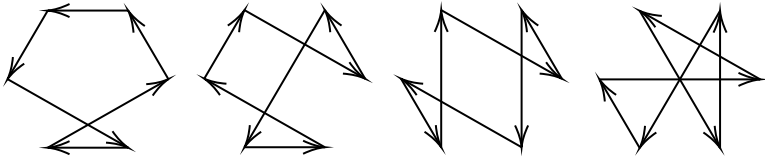
There are 3 cycles up to rotation corresponding to $T(6,0) = 9$:



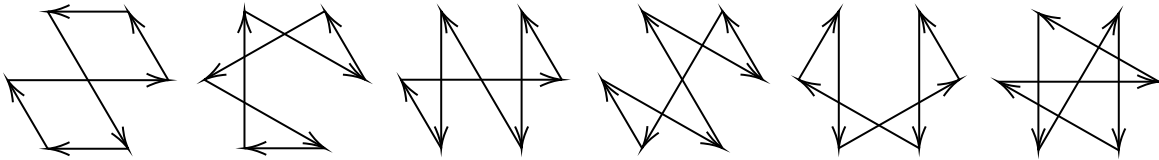
There are 2 cycles up to rotation corresponding to $T(6,1) = 12$:



There are 4 cycles up to rotation corresponding to $T(6,2) = 21$:



There are 6 cycles up to rotation corresponding to $T(6,3) = 36$:



To get the cycles corresponding to $T(6,4) = 21$, $T(6,5) = 12$ and $T(6,6) = 9$, take the reflections of those corresponding to $T(6,2) = 21$, $T(6,1) = 12$ and $T(6,0) = 9$, respectively.